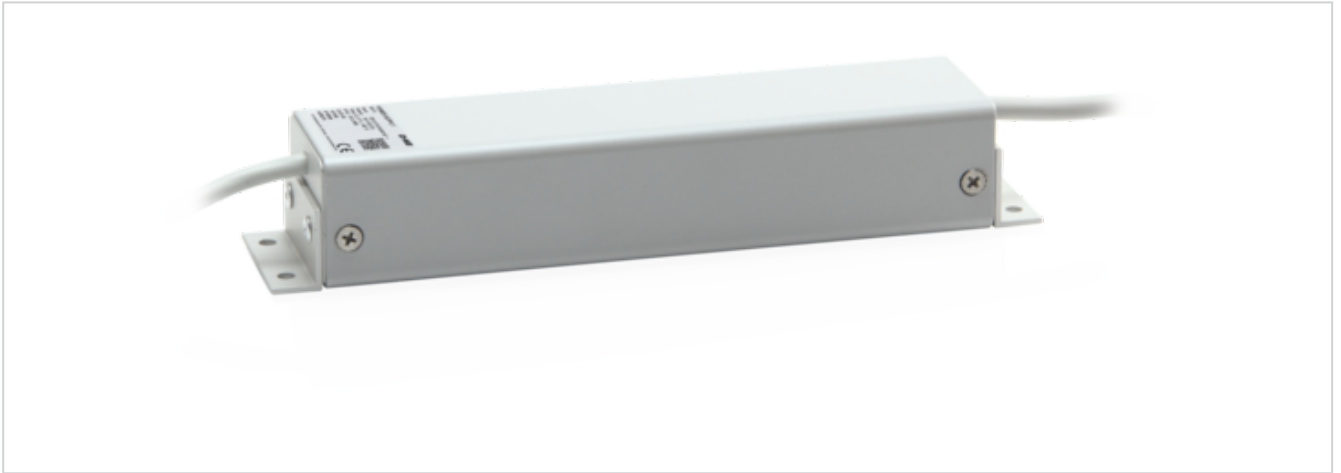


SNT 2



Performance features

- + External ventilation power supply unit, 230 V AC
- + Activation, e.g. using 230 V AC ventilation button
- + Up to 2 A total drive current
- + For controlling 24 V DC drives
- + Surface-mounted design

Technical data

SNT 2

Supply	230 V AC / $\pm 10\%$ / 50 Hz
Performance	65 W / 110 VA
Output	24 V DC / 2 A
Mode of operation	Short-time duty 20 % duty cycle
Type of protection	IP 50
Temperature range	0 °C ... +60 °C
Housing	Aluminium
Colour	Silver (~ RAL 9006)
W x H x D	232 x 50 x 40 mm
Weight	0.8 kg
Art. No.	20.031.60

Example of application

